

SMARTZONE GEOSPATIAL PLATFORM



Webraska's market-proven, high-performance platform for the most demanding Internet and Mobile Mapping, GPS Navigation, LBS, Fleet Management and Local Search applications.

SmartZone Geospatial Platform (SGP) is the core middleware powering a broad range of applications and services including:

- GPS-enabled turn-by-turn navigation applications;
- Web-based maps and directions services;
- Professional fleet management and tracking applications;
- Consumer location-based services.

The SmartZone Geospatial Platform has been deployed with numerous wireless carriers and other service providers worldwide and became a de facto standard. The depth and breadth of feedback we receive from our worldwide customer base helps Webraska extend its technological lead over other geospatial vendors.

Benefits

The strength of SmartZone Geospatial Platform (SGP) rests in using standard complementary technologies and advanced tools dedicated to content provider integration. The SGP is regularly upgraded to maintain carrier-grade standards including performance, speed, full scalability, failover recovery, availability and stability.

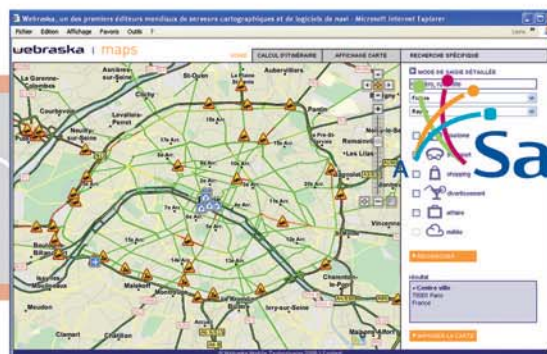
Highlights include:

- Easy to use, powerful data integration tool capable of processing millions of records;
- Adapted deployment and hosting solutions on site or off site according to the customer needs
- Open Location Services (OpenLS v1) compliant as well as Java and SOAP APIs allowing to access a comprehensive range of geospatial functionalities;
- Support for Linux operating system and major database platforms (Oracle, MySQL);
- SDK WSDL (Java & C#) and additional tools packaged to enable developers to directly design and test their applications;
- Professional Services including training, installation, integration, configuration and acceptance testing;
- Account management & access restriction enabling administration and data flow control;
- Quarterly datasets updates for NAVTEQ data (other suppliers upon request).

Table of key performances

- 40 dynamic GIF maps/second/CPU
- 80 address geocodings/second/CPU
- 25 freeform address geocodings/second/CPU
- 60 long routes/second/CPU

*Measured on a RedHat 4, Pentium IV 3.0GHz 3Gb RAM test platform,
10 simultaneous users*



SMARTZONE
GEOSPATIAL PLATFORM

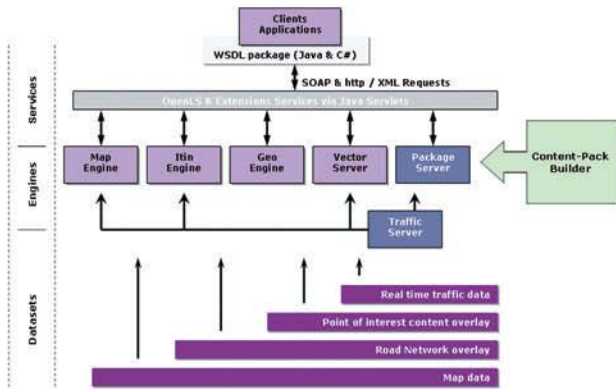


Sanef COMPANY

webraska

Architecture

- High-intensity calculations carried out by engines implemented in C and dramatically optimized
- Data for core engines manipulated in RAM
- Application Server layer implemented as Java Servlets
- Load balancing and clustering
- UTF8 data format compliant



- Ability to configure & optimize travel through a number of way-points
- Avoid areas, street or Points Of Interest (POI)
- Real-time traffic consideration
- Ranking routes by travel distances and times

Presentation Service

The interface for map display functionality supports:

- Image overlays
- Geometric map overlays
- Multiple output maps
- Numerous output raster map formats
- Real-time traffic overlay
- Look & feel optimisation for different device types

Directory Service

Complex POI proximity search functionality including:

- Multi databases management,
- Datasets versioning and access restriction,
- Ability to search on a number of criteria
- SmartZone Content Pack Builder, Webraska's content data integration tool.

Fonctions

Location Utility Service

Enhanced and configurable geocoding and reverse-geocoding functionality including:

- Support for abbreviations and cardinals
- Country-specific syntactic parsers
- Configurable street number handling
- Quality of service factors
- Sorting of results.

Route and Rank Service

Functionality include:

- Any combinations of route instructions, turn-by-turn manoeuvres, route geometry and maps to describe routes
- Configurable maps displaying the route start, end, manoeuvres or overview

Vector Service – Webraska Extension

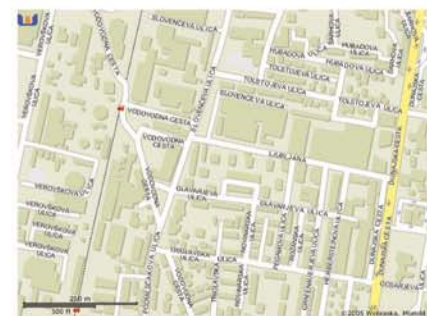
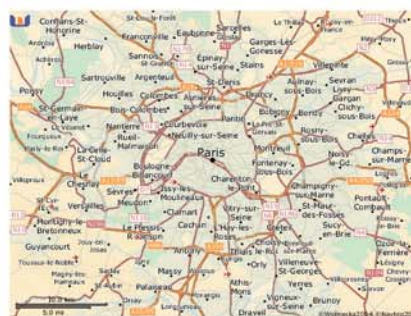
Service extension designed to support the vector functionalities of Webraska Navigation products:

- Extraction and compression of vector data suitable for use by Navigation client
- Variety of geographic shapes
- Additional data attributes

SmartZone Content Pack Builder is the outcome of Webraska's strong partnership with existing customers and massive experience of data integration. It offers flexibility and improves quality control, maintenance and support. This tool produces "Content packages" in a set of 7 identified steps.

Incorporated Traffic Services

Integration with the optional traffic services enables search of traffic events in navigational corridor, in proximity or shape, traffic adjusted drive times, and traffic maps.



Examples of different map rendering: different zoom levels, relief overlay, fonts according to language specificities

webraska

WEBRASKA MOBILE TECHNOLOGIES

www.webraska.com

22, rue Guynemer. B.P. 107
78602 Maisons-Laffitte Cedex, France

Sanef COMPANY

info@webraska.com

Tel. +33 (0)1 39 12 88 00
Fax +33 (0)1 39 12 88 88

The present document has been drawn up for information purposes only and the data contained herein are subject to amendment. It does not constitute therefore any contractual arrangement or undertaking, nor does it contain any contractual offer on Webraska's part. The references to trademarks, brands or other distinguishing signs of Webraska's business partners are given for information purposes only and do not reflect any wish on Webraska's part to appropriate any rights thereon which may be owned by any third parties.

Copyright © Webraska Mobile Technologies 2006. All rights reserved